

How to Enroll

The basic steps of enrolling in a Community Care, Inc. program

1

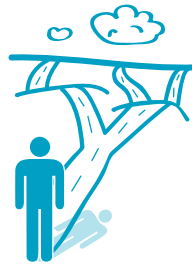
CALL YOUR LOCAL ADRC (Aging & Disability Resource Center)



Find the Aging and Disability Resource Center in your area, and let them know you are interested in long-term care options.

2

OPTIONS COUNSELING IS PROVIDED



The ADRC will meet with you and explain the programs and long-term care options available. Tell the counselor you are interested in a Community Care program.

3

FUNCTIONAL & FINANCIAL SCREENING TAKES PLACE



The ADRC will determine your level of care needs and financial eligibility, if you might be eligible.

4

CHOOSE WHICH PROGRAM WILL MEET YOUR NEEDS



Learn about the Community Care programs offered in your area, and choose the one right for you!

5

CREATE YOUR CARE PLAN WITH YOUR TEAM



After enrollment in Community Care, meet with your care team to develop a plan that will support your needs and outcomes.

Have Questions?

Please Call
866-992-6600